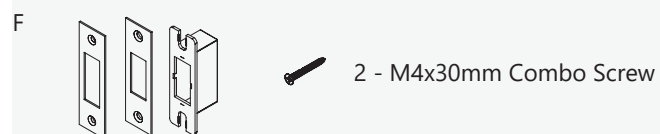
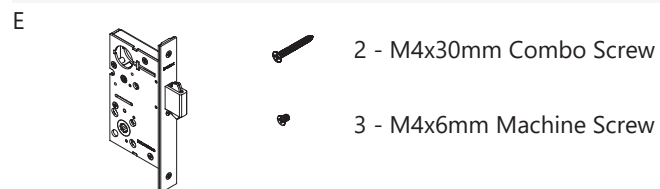
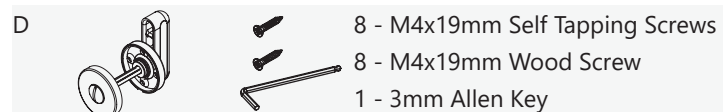
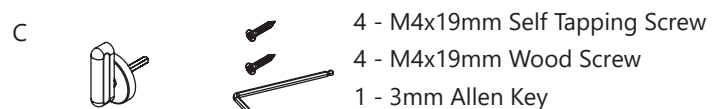
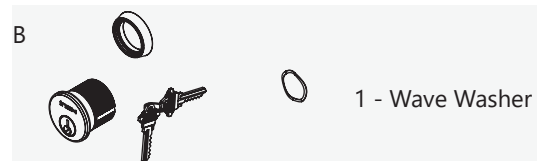
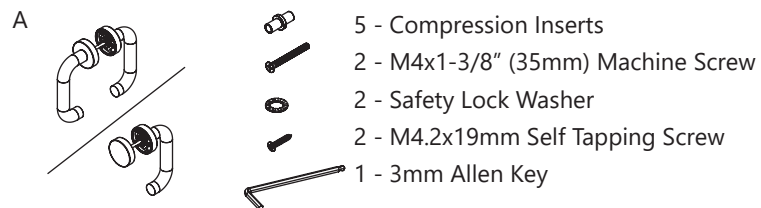


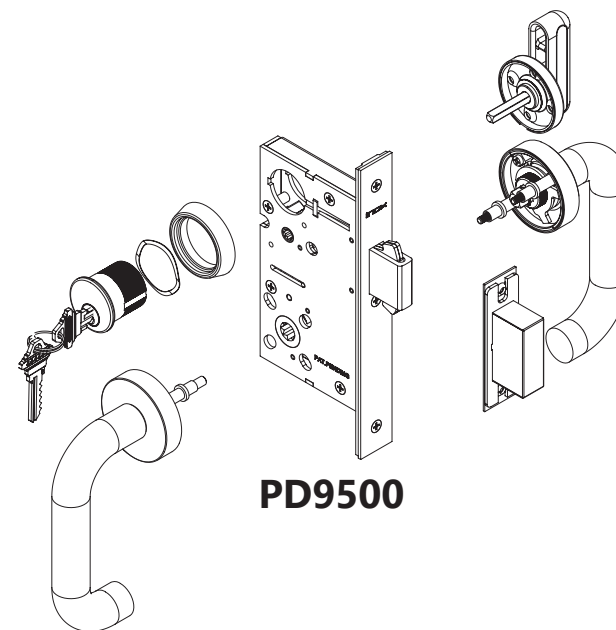
PD9500 Components List

	Part Lists	40	50	60	70	95
A	X Series Trim	1EA	1EA	1EA	1EA	1EA
B	Cylinder & Keys	-	1EA	-	1EA	1EA
C	Thumbtum	-	1EA	1EA	-	-
D	Coin Tum Release with Thumbtum	1EA	-	-	-	-
E	Mortise Lock & Faceplate	1EA	1EA	1EA	1EA	1EA
F	Strike Plate w/ Dust Box	1EA	1EA	1EA	1EA	1EA



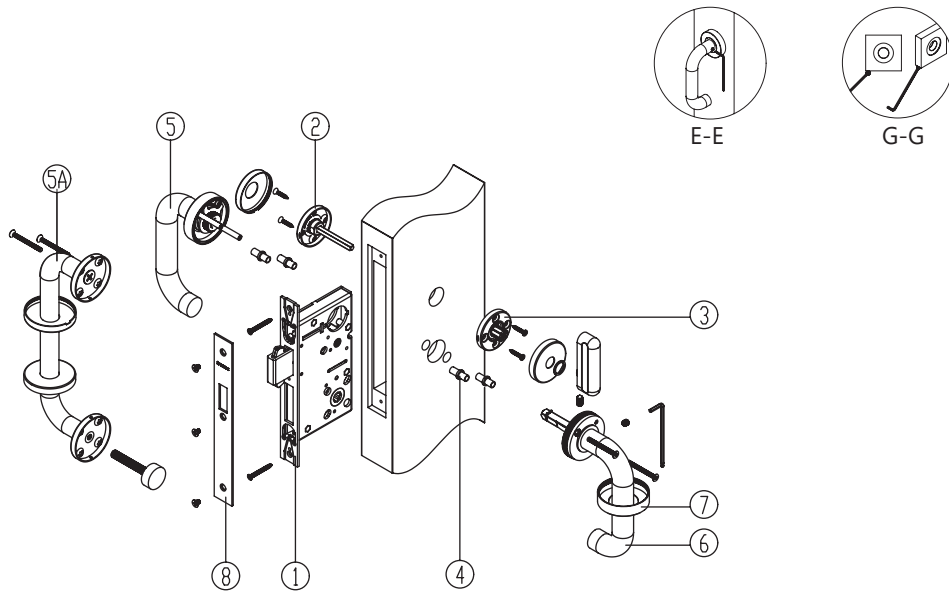
Installation Instructions

PD9500 Emergency Egress Mortise Lockset for Sliding Door with X Series Trim or Surface Pull



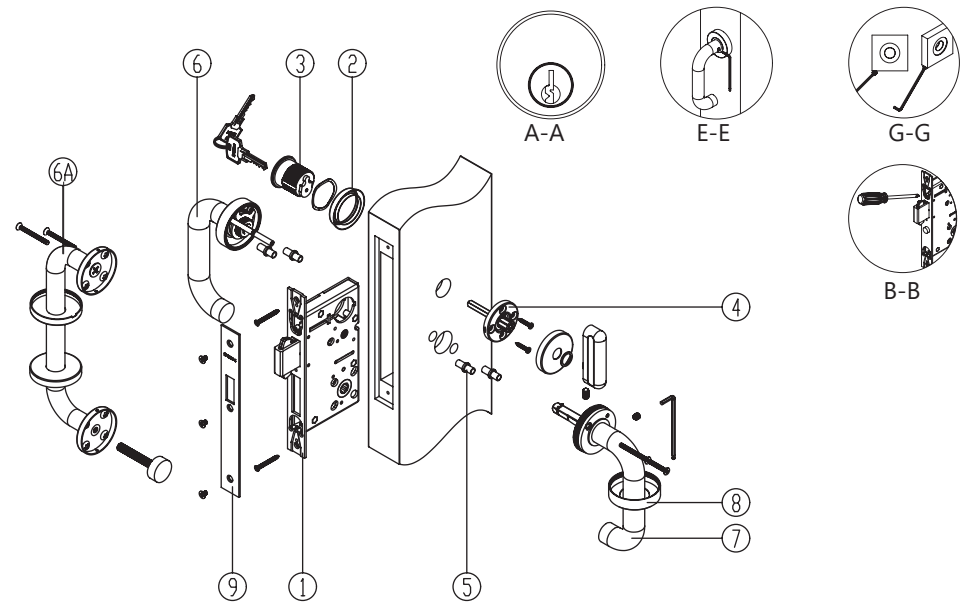
This product has been tested and certified for UL1784.

Installation Instructions for Privacy Function: PD9540 with X Series Trim



1. Install mortise lockcase in door prep.
2. Mount outside emergency release with M4x#6 screws.
3. Mount inside privacy thumbturn rose with M4x#6 screws. Mount rose cover and clear washer before mounting thumbturn piece. Use Allen Key to tighten set screws. Mount the outside thumbturn release rose cover.
4. Install the compression inserts on both sides.
5. Install outside X series trim. Do not tighten the set screws.
- 5A. *Alternative Option: Install outside surface pull without spindle and do not tighten the set screws.*
6. Install inside X series trim and tighten the M4x35mm screws.
7. Install the inside rose cover. XGT is threaded, XGS requires a set screw.
- ▲ **NOTE:** After the lever is installed, fully tighten the set screws for both inside and outside trims. See Section E-E.
- ▲ **NOTE:** For XGS square rose, ensure that the rose is aligned prior to tightening the set screw. See Section G-G.
8. Install armored faceplate with M4x6mm screws.

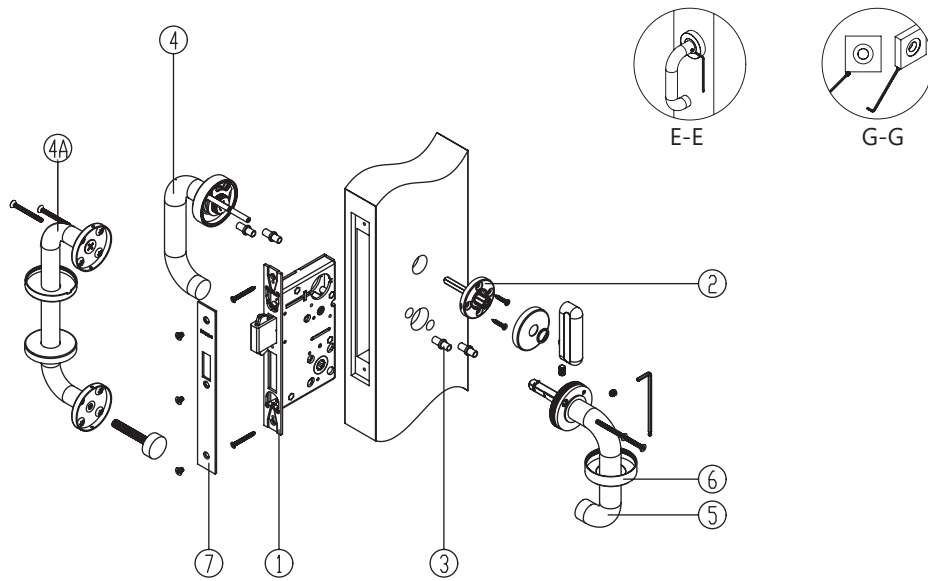
Installation Instructions for Inner Entry Function: PD9550 with X Series Trim



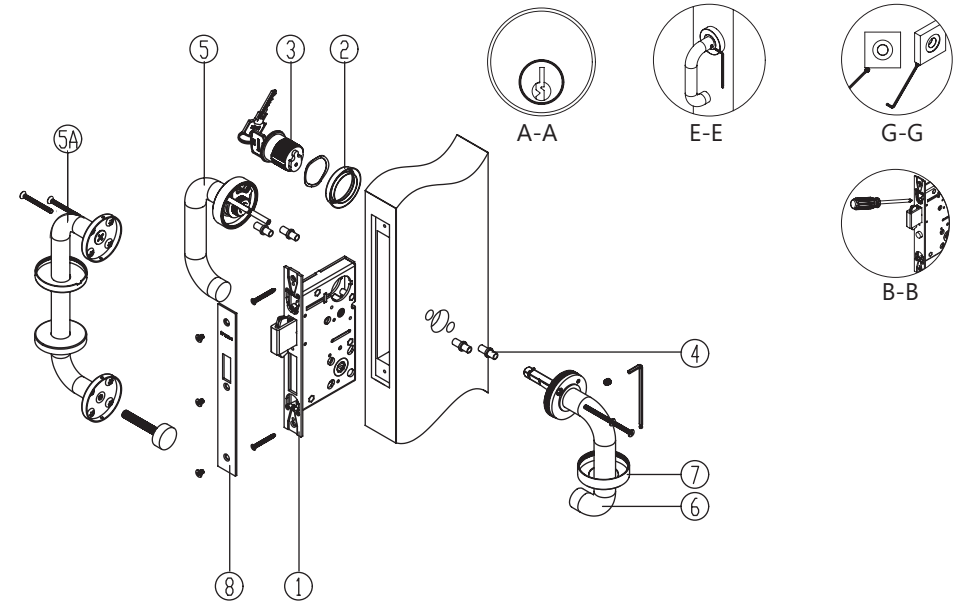
1. Install mortise lockcase in door prep.
- ▲ **NOTE:** DO NOT tighten the faceplate screws until the cylinder has been installed.
2. Screw on outside cylinder escutcheon ring with spacer.
3. Install mortise cylinder.
- ▲ **NOTE:** Key slot on cylinder should be on lower center position. See section A-A Using a screwdriver, tighten the screws on the lockcase to position the cylinder into place. See Section B-B.
4. Mount inside privacy thumbturn rose with M4x6mm screws. Mount rose cover and clear washer before mounting thumbturn piece. Use Allen Key to tighten set screws.
5. Install the compression inserts on both sides.
6. Install outside X series trim. Do not tighten the set screws.
- 6A. *Alternative Option: Install outside surface pull without spindle and do not tighten the set screws.*
7. Install inside X series trim and tighten the M4x35mm screws.
8. Install the inside rose cover. XGT is threaded, XGS requires a set screw.
- ▲ **NOTE:** After the lever is installed, fully tighten the set screws for both inside and outside trims. See Section E-E.
- ▲ **NOTE:** For XGS square rose, ensure that the rose is aligned prior to tightening the set screw. See Section G-G.
9. Install armored faceplate with M4x6mm screws.

Installation Instructions for Patio Function: PD9560 with X Series Trim

Installation Instructions for Classroom Function: PD9570 with X Series Trim

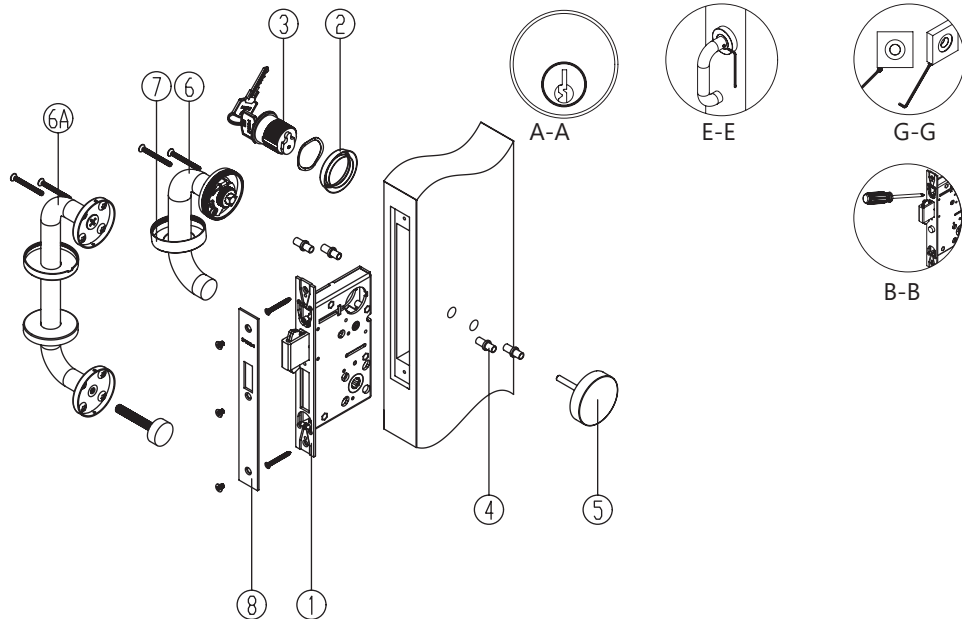


1. Install mortise lockcase in door prep.
2. Mount inside privacy thumbturn rose with M4x6mm screws. Mount rose cover and clear washer before mounting thumbturn piece. Use Allen Key to tighten set screws.
3. Install the compression inserts on both sides.
4. Install outside X series trim. Do not tighten the set screws.
- 4A. *Alternative Option: Install outside surface pull without spindle and do not tighten the set screws.*
5. Install inside X series trim and tighten the M4x35mm screws.
6. Install the inside rose cover. XGT is threaded, XGS requires a set screw.
- ▲ **NOTE:** After the lever is installed, fully tighten the set screws for both inside and outside trims. See Section E-E.
- ▲ **NOTE:** For XGS square rose, ensure that the rose is aligned prior to tightening the set screw. See Section G-G.
7. Install armored faceplate with M4x6mm screws.



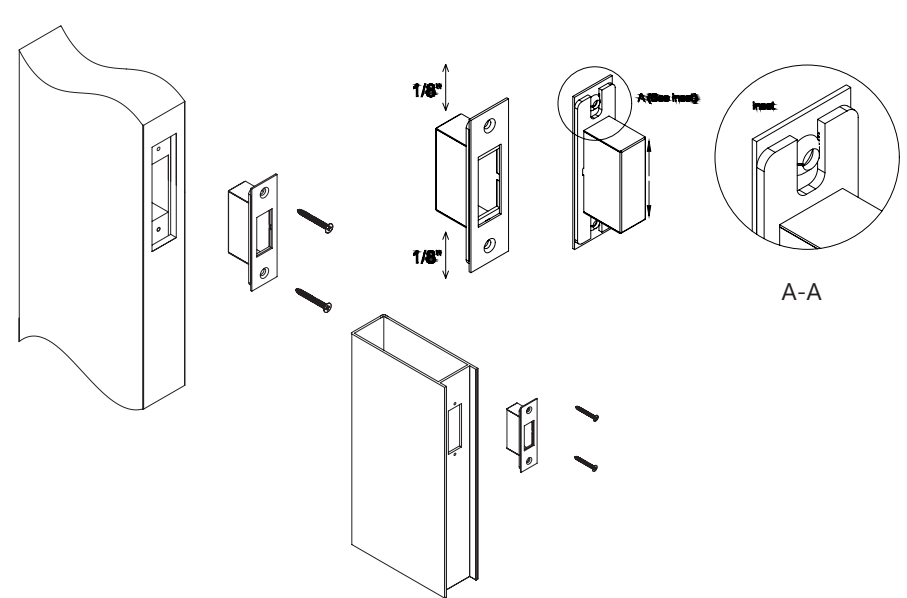
1. Install mortise lockcase in door prep.
- ▲ **NOTE:** DO NOT tighten the faceplate screws until the cylinder has been installed.
2. Screw on outside cylinder escutcheon ring with spacer.
3. Install mortise cylinder.
- ▲ **NOTE:** Key slot on cylinder should be on lower center position. See section A-A. Using a screwdriver, tighten the screws on the lockcase to position the cylinder into place. See Section B-B.
4. Install the compression inserts on both sides.
5. Install outside X series trim. Do not tighten the set screws.
- 5A. *Alternative Option: Install outside surface pull without spindle and do not tighten the set screws.*
6. Install inside X series trim and tighten the M4x35mm screws.
7. Install the inside rose cover. XGT is threaded, XGS requires a set screw.
- ▲ **NOTE:** After the lever is installed, fully tighten the set screws for both inside and outside trims. See Section E-E.
- ▲ **NOTE:** For XGS square rose, ensure that the rose is aligned prior to tightening the set screw. See Section G-G.
8. Install armored faceplate with M4x6mm screws.

Installation Instructions for Security Communicating Function: PD9595 with X Series Trim



1. Install mortise lockcase in door prep.
- ▲ **NOTE:** DO NOT tighten the faceplate screws until the cylinder has been installed.
2. Screw on outside cylinder escutcheon ring with spacer.
3. Install mortise cylinder.
- ▲ **NOTE:** Key slot on cylinder should be on lower center position. See section A-A. Using a screwdriver, tighten the screws on the lockcase to position the cylinder into place. See Section B-B.
4. Install the compression inserts on both sides.
5. Install the outside blank rose cover.
6. Install inside X series trim and tighten the M4x35mm screws.
- 6A. *Alternative Option: Install outside surface pull without spindle and do not tighten the set screws.*
7. Install the inside rose cover. XGT is threaded, XGS requires a set screw.
- ▲ **NOTE:** After the lever is installed, fully tighten the set screws for both inside and outside trims. See Section E-E.
- ▲ **NOTE:** For XGS square rose, ensure that the rose is aligned prior to tightening the set screw. See Section G-G.
8. Install armored faceplate with M4x6mm screws.

Installation Instructions for PD9500 Strike:



1. Insert Dust Box. Center line for Dust Box matches center line of Lock Bolt.
2. Attach Strike plate using Strike Plate Screws. While tightening screws, pay attention to the indented lines on the dust box, alignment and spacing between top and bottom of the dust box and strike plate should be even.
- ▲ **NOTE:** The dust box can be adjusted up and down: Loosen the strike plate screws to allow the dust box to travel up and down as needed. Center of the dust box is aligned with the center of the lock bolt, after vertical adjustment is complete, retighten the screws to secure the strike plate.